

HELP US MEET THE CHALLENGE

THE SOVEREIGN HILL
FOUNDATION BEQUESTS





'To be perfectly honest, I thought that they were biting off more than they could chew and I didn't really think they'd make it. Happily, I was wrong.'

The Hon. Sir Henry Bolte, the then Premier of Victoria and our first Patron, made this statement at the time of Sovereign Hill's 10th Anniversary celebrations in 1980.



Sovereign Hill was founded in 1966 by a group of Ballarat people concerned to preserve their history in an activated Outdoor Museum complex, complemented by the Gold Museum.

Its commitment to story-telling and historical interpretation is matched by a very sharp focus on the visitor. It is a place where visitors are entertained and involved, as well as being informed. Sovereign Hill is now an integral part of the school education programs in Victoria and beyond.

Sovereign Hill has been an amazing success story for Ballarat!

EACH YEAR, SOVEREIGN HILL
AND THE GOLD MUSEUM
ATTRACT ALMOST 700,000
VISITORS.

The Sovereign Hill Museums Association, which administers Sovereign Hill and the Gold Museum, is a not-for-profit, community-based cultural tourism organisation, run by a voluntary Board elected by members of the Association. It is a major employer in the City and has been the catalyst for significant tourist development, driving destination tourism for our region.





YOUR BEQUEST WILL ASSIST
US TO MEET THE CHALLENGES
THAT LIE AHEAD.

The Association has been financially independent from its outset and has used the revenues generated by entrance takings, sales and donations to expand upon that first vision. New challenges lie ahead.

If Sovereign Hill is to grow, as well as maintain its priceless collections, expand its conservation and research facilities, and develop new exhibits, the creation of a strong capital base is an essential prerequisite.

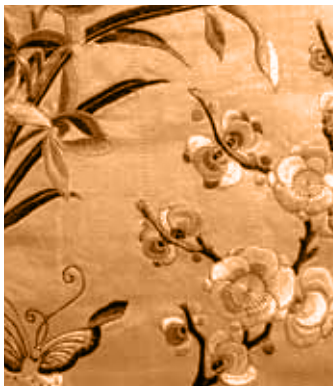
The Sovereign Hill Foundation, which is independently managed, was established in 1996 to directly meet this challenge. You can assist us in a most practical way, by considering a gift to the Foundation in the form of a bequest in your will.



THE SOVEREIGN HILL FOUNDATION HELPS UNDERPIN OUR ON-GOING FINANCIAL VIABILITY.

Sir Henry Bolte, himself, made a significant bequest to Sovereign Hill and this formed the basis of a Trust which now has over \$700,000 invested to provide a source of funds for the acquisition of objects and art works for the Collection.

We have also received many other major bequests that have helped finance capital projects or provided exhibits for display in our Museum.



IF YOU ARE INTERESTED IN MAKING PROVISION TO ASSIST SOVEREIGN HILL, THERE ARE SEVERAL FORMS OF BEQUESTS THAT COULD BE CONSIDERED.

A SPECIFIC BEQUEST may be a property, work of art, a sum of money – in fact, anything of value.

A PERCENTAGE BEQUEST will allow you to nominate amongst your beneficiaries, defined percentages of your total estate.

A GIFT OF RESIDUE means that, after providing first for nominated family and friends in your will, the balance of your estate can be bequeathed to Sovereign Hill.

A variety of arrangements can be set in place to acknowledge your generosity.





We recommend that you consult with your solicitor and financial advisor to ensure that your will is correctly worded to achieve your wishes and to ensure that taxation issues are addressed.

You may wish to discuss your intentions with us so that we can make sure that your bequest is used to help Sovereign Hill in accordance with your wishes.

Please do not hesitate to telephone the Sovereign Hill Chief Executive Officer on 03 5337 1111 or write to:
The Chairman
The Sovereign Hill Foundation
Sovereign Hill
39 Magpie Street, Ballarat 3350



SOVEREIGN HILL APPRECIATES
YOUR CONSIDERATION OF A
GIFT TO THE FOUNDATION.

The Sovereign Hill Foundation is an internal fund
of The Sovereign Hill Museums Association.
ABN 87 565 053 651

A detachable form is provided
for your assistance.

The Chairman
The Sovereign Hill Foundation
Sovereign Hill
39 Magpie Street, Ballarat 3350
Telephone 03 5337 1111
Facsimile 03 5333 5663

Please tick the appropriate box.

- I have made a gift to The Sovereign Hill Foundation
in my will.
- I would like to discuss a gift or bequest to
The Sovereign Hill Foundation.

Title

First Name

Surname

Address

.....

.....

.....

Postcode

Preferred Telephone Number

The best time to contact me is

